



# LV JUICE

## Celebrate Christmas

with a

# TRANSNET TOOL PROMO

### KIT CONTAINS:

- M611E Duspol Continuity Tester
- 101562/Z1 Haupa Six Piece Screwdriver Set
- 210052 Haupa 165mm Pliers
- 210068 Haupa 165mm Side Cutters
- 220103 Haupa Tool Pouch



#TNTOOLPROMO  
**\$245**

# FREE

WHILE STOCKS LAST

# BLUETOOTH SPEAKER

When you spend  
over \$1000 (excl  
GST) on one  
invoice this month



## This Month

NEW ALUMINIUM FLEX  
CONNECTORS

PAGE 3

WHY CHOOSE RAYCHEM?  
PAGE 4

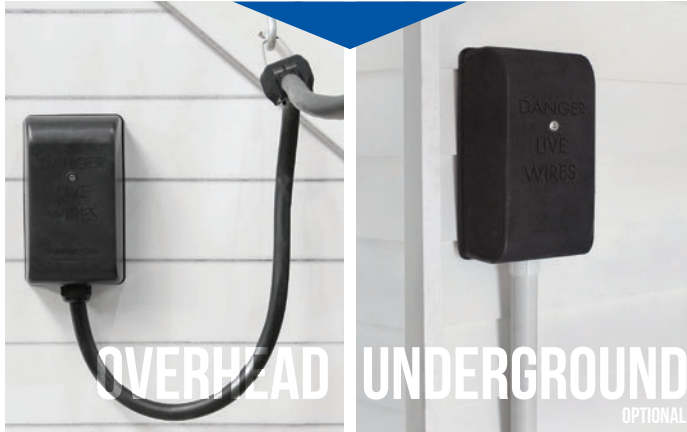
BALMORAL LV GLOVE  
TESTER

PAGE 6



## TRANSNET MAINS ENTRY BOXES: AVAILABLE IN 1, 2 & 3 PHASE

# TRANSNET MAINS ENTRY BOX 1, 2 & 3 PHASE



### #TNMEB1PH

81.5mm W x 206.50 H x 77mm D

### #TNMEB2PH

146.5mm W x 246.50 H x 87mm D

### #TNMEB3PH

146.5mm W x 246.50 H x 87mm D

### FEATURES

- Made of UV stable plastic that won't shatter
- Shear bolt connectors for perfect connection every time
- Safer – No bare live parts
- Main cable supported by gland in gland plate
- Gland plate perfect fit for conduit gland too
- Strip length clearly outlined on connector body
- Make off connectors outside enclosure, saves

time & effort

- Electrical test points and test point caps built into connector bolt for ease of testing
- Captive Stainless Steel cover screw
- Insulated bimetallic connectors will terminate AL/CU cables, 4mm<sup>2</sup>-35mm<sup>2</sup> range



## TIGER TAIL - INSULATING LINE COVER 650V



Also known as line cover, Tiger Tails are designed to provide temporary electrical insulation, mechanical protection and visual warning of power lines and conductors. Utilised by utilities and electrical contractors, these robust units have decades of engineering and development to ensure the highest quality and safety standards. Made from HDPE plastic with a mechanical interlock fastening system. Certified AS4202, Class I and voltage rated 650V.



### #DB.35A

2.5m LONG x 35mm ID, 650V WITH MECHANICAL INTERLOCK



### #DB.35ARB125

1.25m LONG x 35mm ID, 650V WITH MECHANICAL INTERLOCK



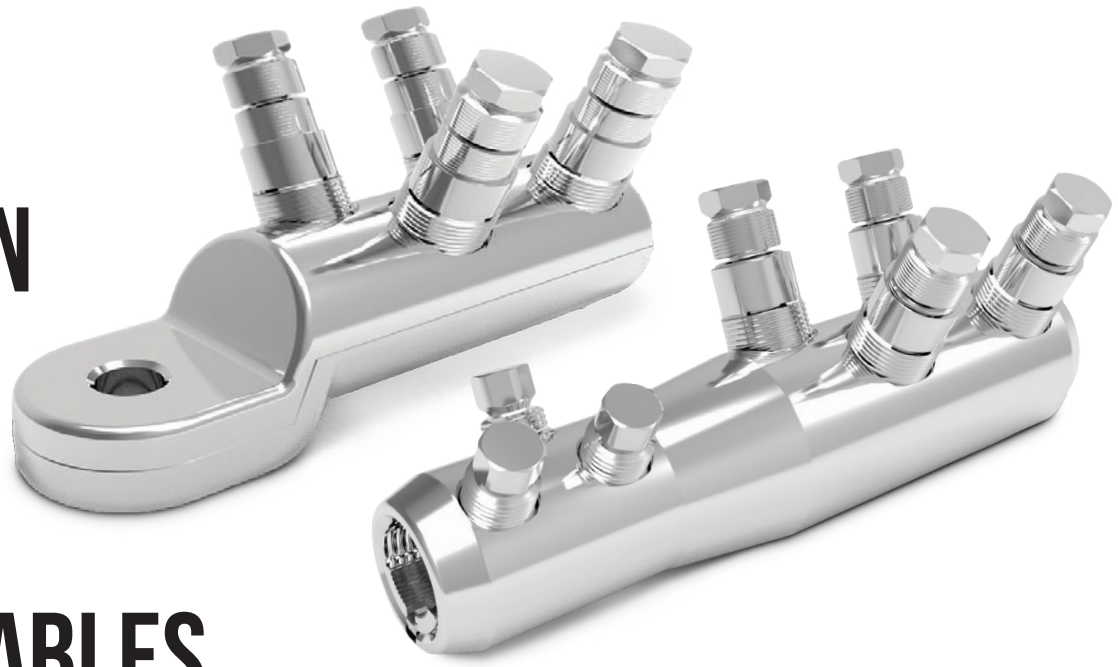
# TOUGH & FUNCTIONAL







# EASY & SECURE CONNECTION SYSTEM FOR ALUMINIUM FLEXIBLE CABLES



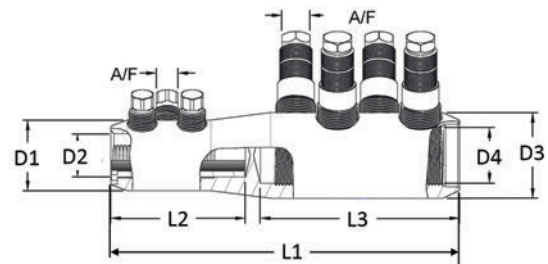
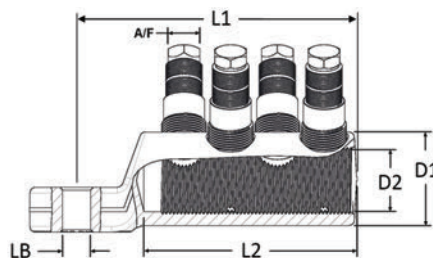
TE Connectivity's BSMB and BLMT-FLEX mechanical connectors and lugs are designed for use in low and medium voltage applications up to 42 kV. All products consist of high tensile aluminium tin-plated body and shear-head bolts. Made of special aluminium alloy, the new patented two step shear off bolts are irremovable once their heads have been sheared off. The internal surface of the conductor holes are grooved. Lugs are suitable for outdoor and indoor applications and are available with different palm hole sizes.

## FEATURES

- Easy and secure connection system for Aluminum flexible cables tested to IEC-61238-1 Class A
- New patented two step shear off bolts provide pre-determined torque & ensure reliable and secure contact without damaging fine Aluminum strands
- Easier and faster installation without application tooling and reduced number of bolts
- To be available for cable cross sections 70 mm<sup>2</sup> through 500 mm<sup>2</sup>
- Dual range connectors available for connecting Cu – Al and Al – Al combinations for class 5 & class 2 conductors

Cat No.	Cross Sectional Range (mm <sup>2</sup> )		Dimensions (mm)							Contact Bolts Quantity		Head Size AF (mm)	
	Class 2 Conductors	Class 5 Flexible Conductors	L1	L2	L3	D1	D2	D3	D4	Side 1	Side 2	Side 1	Side 2
BSMB-150/400-400-FLEX	150/400	300/400	210	80	120	42	25.5	51	33	3	4	13	17

Cat No.	Cross Sectional Range (mm <sup>2</sup> )		Palm Hole Diameter (mm) LB	Dimensions (mm)				Contact Bolts Quantity	Head Size AF (mm)
	Class 5 Conductors			L1	L2	D1	D2		
BLMT-400 FLEX-15	300/400		15	150	115	51	33	4	17
BLMT-400 FLEX-17	300/400		17	150	115	51	33	4	17
BLMT-400 FLEX-21	300/400		21	150	115	51	33	4	17



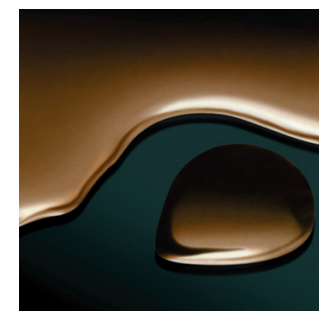




# CONSTANT OPTIMIZATION OF PROVEN TECHNOLOGY

Our Raychem technology is based on specially-formulated thermoplastic polymer materials. Through our cost-effective manufacturing processes, TE can combine chemical additives with the polymers to create optimized solutions for various industry applications. The compounds for these materials are designed, selected, and mixed in TE's own compounding factories. Sophisticated process controls employed during extrusion, cross-linking and expansion ensure uniform wall-thickness before and after installation.

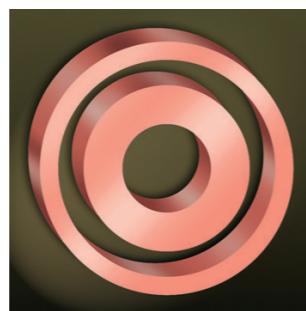
Some of our significant technical advances include:



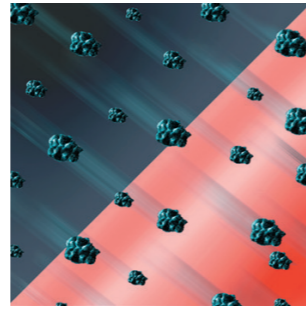
Moisture protection oil barrier



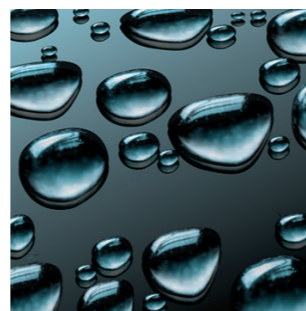
Void-free interfacial bonding



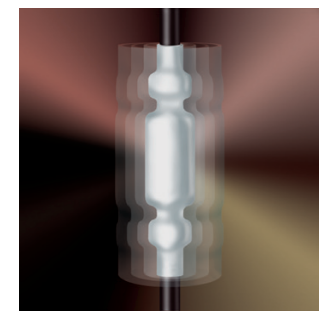
Electrical insulation shape memory



Resistance to surface electrical activity



Environmental sealing and protection



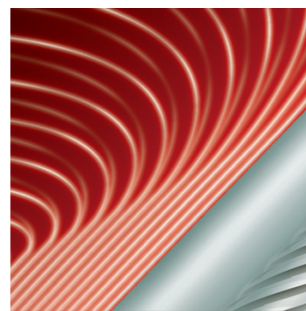
Mechanical protection



Flame retardant and fire resistant



Resistance to thermal aging and UV light



Electrical stress grading & conductivity



For more than 60 years, Raychem from TE Connectivity (TE) has supported the delivery of power for a wide variety of industries, applications and environments. With a proven track record of technical innovation, reliable performance, lower installation costs and exceptional technical support, TE provides heat shrink solutions for sealing and protection including tubing, tape, and insulation. TE pioneered the original heat shrink technology for energy applications and the industry continues to count on us to deliver the latest advances.

EVERY CONNECTION COUNTS







## SALISBURY CLASS 0 INSULATING GLOVES & BALMORAL GLOVE TESTER

### SALISBURY RUBBER INSULATING GLOVES

- Flexible and durable
- High dielectric & physical strength
- Meet and exceed the requirements of current ASTM D120 specifications
- Available in solid colour (Black or Yellow) with other solid colours available upon request
- 11 inch length
- Max Use Voltage 1000V AC



### BALMORAL LV GLOVE TESTER

Don't get caught without a glove tester! Gloves need to be checked prior to each use, and using the correct tool and procedure enhances safety and eliminates tearing or destroying gloves with incorrect devices or techniques. Slide your glove cuff in one end, roll up trapping air, and check for pin holes or leaks.

#### FEATURES

- Takes seconds to use
- Durable Lightweight plastic
- Fits inside a standard glove bag
- Tapered at both ends for ease of use
- 300x25mm

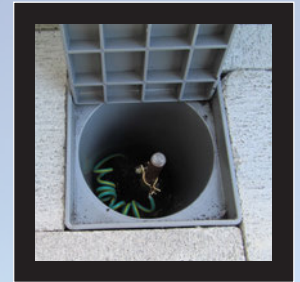
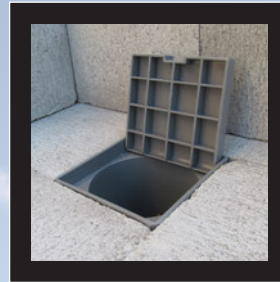
**SALISBURY**

by Honeywell



## TRANSNET EARTH ROD INSPECTION BOX

DESIGNED BY NZ CONTRACTORS FOR NZ CONTRACTORS



Main earth connections are an integral part of a safe installation, and need to be accessible but also protected to ensure the integrity of the connection isn't compromised. The best way to do this is to cover it with a purpose-built inspection box. TransNet has engineered a custom-designed box with a hinged latching lid for easy access. This specially designed lid is strengthened for longevity and to enable easy installation in footpaths.

### FEATURES

- Heavy duty strengthened, hinged and latched lid
- Made from UV stabilised material
- Square to easily fit into paving work
- Easy to identify with embossed lid detail
- Extensive rain water access
- Designed and manufactured in NZ
- Dimensions: 120mm X 120mm X 200mm tall



All Specials and Products featured in TRANSNET JUICE are available from all good electrical wholesalers.





## INTUBATT

### Applications

Firetherm Intubatt should be used to seal openings in fire compartment walls and floors around services such as suitably supported fire rated dampers, pipe work and electrical cabling against the passage of fire and can provide up to 4 hours integrity in Block-work

and plasterboard constructions.

### Features

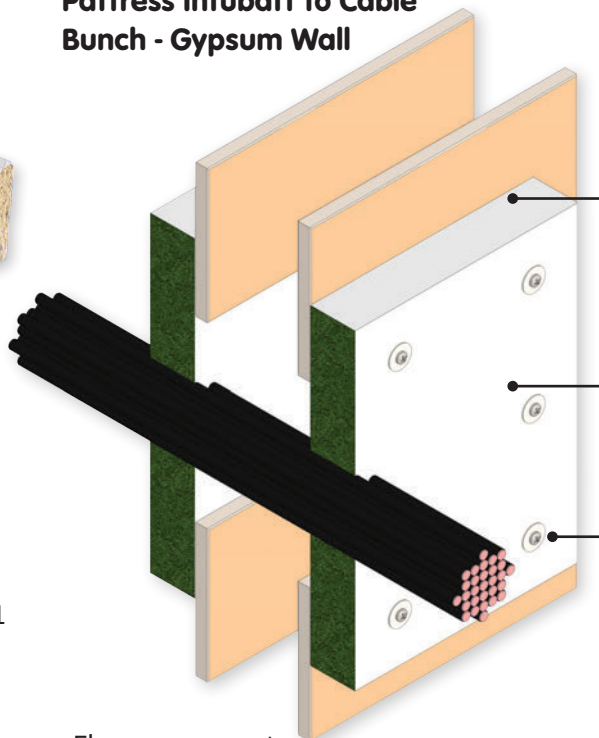
- Suitable for dry internal use only
- Joint widths 0 to 35 mm linear; 30 to 150 mm movement details
- Depth to width ratios 1:1 walls and floors; 2:1 split wall seals

- Standard colours are white and grey. Can be over-painted using acrylic paints (must be fully cured before over coating)
- Tack free time 15 to 60 minutes, depending on temperature/humidity



### TYPICAL INSTALLATION

Pattern Intubatt to Cable Bunch - Gypsum Wall



Integrity up to  
**120**  
minutes

Insulation up to  
**120**  
minutes\*

\*with 2 x 50mm Intubatt

INTUMASTIC FILLET - 10MM WIDE

INTUBATT

SCREWS & PENNY WASHERS

## FTMASTIC

### Applications

Firetherm Intumastic may be used to fire seal linear joints between substrates in compartment locations. Intumastic may also be used in movement joints and offers a movement capability of up to 30%.

- Depth to width ratios 1:1 walls and floors; 2:1 split wall seals
- Standard colours are white and grey. Can be over-painted using acrylic paints (must be fully cured before over coating).
- Tack free time 15 to 60 minutes, depending on temperature/humidity

### Features

- Suitable for dry internal use only
- Joint widths 0 to 35 mm linear; 30 to 150 mm movement details

- Floor movement seals
- Head of wall seals
- Intubatt bonding and pointing

May also be used for fire and smoke sealing around cables, steel pipes, copper pipes, cable trays, combustible pipes, dampers & ducting

### Typical Scenarios

- Fire and smoke seals
- Linear joint seals



Integrity up to  
**240**  
minutes

Insulation up to  
**240**  
minutes



# CHANGE OF SCENERY

## TransNet Moves Auckland Office



### TransNet New Zealand Ltd

#### Auckland

78 Cryers Road  
East Tamaki  
Auckland  
NEW ZEALAND  
Ph 0800 442 182  
Fax 0800 442 183  
PO Box 39 383  
Howick, Auckland

#### Wellington

18 Sydney Street  
Petone  
Wellington  
NEW ZEALAND  
Ph 04 576 2530  
Fax 04 576 0040  
PO Box 39 383  
Howick, Auckland

#### NEW ZEALAND

sales@transnet.co.nz

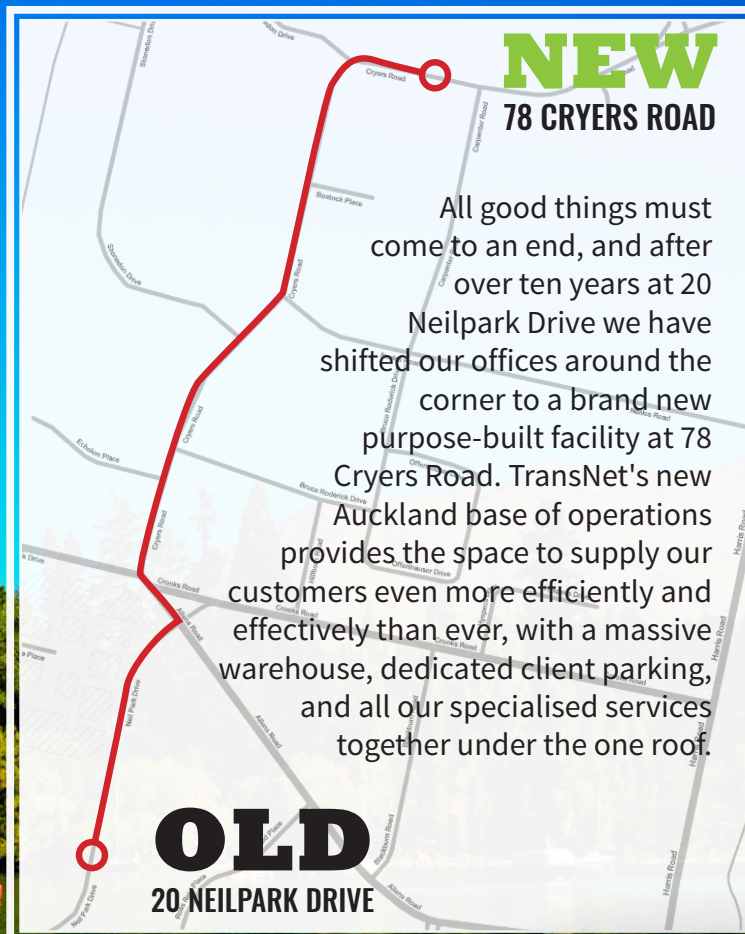
### TransNet Tonga

#### Ma'ufanga

Small Industries  
Ma'ufanga  
TONGA  
Ph +67 627 939  
Fax +67 627 976  
PO Box 2932  
Nukualofa

#### TONGA

transnet@kalianet.to



All good things must come to an end, and after over ten years at 20 Neilpark Drive we have shifted our offices around the corner to a brand new purpose-built facility at 78 Cryers Road. TransNet's new Auckland base of operations provides the space to supply our customers even more efficiently and effectively than ever, with a massive warehouse, dedicated client parking, and all our specialised services together under the one roof.



A HUGE THANK YOU TO EVERYONE WHO HAS SUPPORTED US THIS YEAR! WE LOOK FORWARD TO SEEING YOU AGAIN IN 2017. PLEASE REMEMBER THAT ALTHOUGH WE ARE OPEN ON ALL BUSINESS DAYS OVER THE SUMMER BREAK, COURIER DELIVERIES WILL BE REDUCED, SO PLAN ACCORDINGLY. ALL THE BEST FOR THE HOLIDAYS, THE TEAM AT TRANSNET

TransNet NZ Ltd has made every reasonable effort to ensure the accuracy of this information and it is to the best of our knowledge correct and reliable. Under no circumstances does this constitute an assurance of any particular quality or performance and users should independently evaluate the suitability of products for their desired application. All information in this publication including pricing, drawings, illustrations, images and graphic designs are reflections of our current understanding. TransNet NZ Ltd reserves the right to make any adjustment to this information at any time. Our liability for the products outlined in this publication is set forth in our standard terms and conditions of trade. In case of any potential ambiguities or questions, please contact us for clarification.

